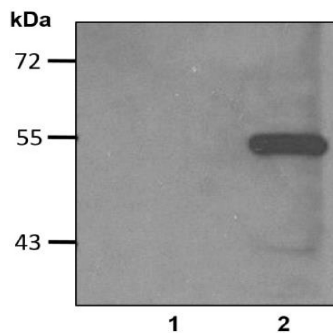


# Anti-V5

Cat. # Y1080, Y1081

- Also Known as:** Anti-V5 (V5.E10) Mouse Monoclonal Antibody
- Isotype:** Mouse IgG1
- Clone** V5.E10
- MW:** ~55/25 kDa
- Species:** N/A
- Immunogen:** GKPIPPLLGLDST (V5) synthetic peptide conjugated to KLH
- Concentration:** 1 µg/µl
- Stock Buffer:** 10 mM PBS (pH 7.2), 10% Glycerol, 0.09% NaN<sub>3</sub> (sodium azide)
- Specificity:** Recognizes V5 (GKPIPPLLGLDST) tagged fusion proteins
- Purification:** Protein A affinity chromatography from culture supernatant of hybridoma cells grown in a bioreactor
- Applications:** Dot, ELISA, IP, IS, WB
- Quality Assurance:** Guaranteed for detecting 1-2 ng of V5-tagged fusion proteins
- Working Conditions:** WB (with ECL): 1:1000-3000 dilution  
IS: 1:500-2000 dilution  
For best results with other assays (e.g.: Dot, ELISA, IP, etc), please determine optimal working dilution by titration test

**Image:**



1:1000 (1µg/mL) Ab dilution probed against HEK293 cells transfected with V5-tagged protein vector; untransfected (lane 1) and transfected (lane 2)

**Storage:** Store at -20°C. Centrifuge after first thaw to maximize product recovery. Aliquot to avoid repeated freeze-thaw cycles.

**Note:** N/A





UBPBio  
12635 E. Montview Blvd. Ste 100  
Aurora, CO 80045, USA  
Fax: 1-800-682-6801  
Email: [info@ubpbio.com](mailto:info@ubpbio.com)  
[www.ubpbio.com](http://www.ubpbio.com)

